

A Line In The Dirt – The Eels

03:44:11 PM 09/24/23

Key: Capo: 1st Fret Notes: Finger pick song

Pick using strings 4, 3, 2 for most of the song, except on the Esus4 it starts with strings 5, 3, 2.

[Intro]

Dsus2 A Esus4 A

[Verse 1]

Dsus2 A Esus4 A
She locked herself in the bathroom again

Dsus2 A Esus4
So I am pissing in the yard

Dsus2 A Esus4 A
I have to laugh when I think how far it's gone

Dsus2 A Esus4
But things aren't funny any more

[Chorus]

A Dsus2 F#m B
I drew a line into the dirt
 A Dsus2 F#m B
And dared her to step right across it
 Dsus2 A Esus4 A
And she did

[Verse 2]

Dsus2 A Esus4 A
So I am knocking on the door again

Dsus2 A Esus4
I say, "Do you want to be alone?"

Dsus2 A Esus4 A
She says, "No I don't wanna be alone"

Dsus2 A Esus4
But I think that you do

[Chorus]

[Bridge]

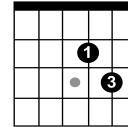
A E F#m E
And I know she's right, I know how it would be

Dsus2 A C
If I had my own way with the world

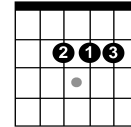
D A Esus4
As I know it should be

Dsus2 A Esus4 A

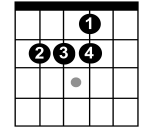
D sus2



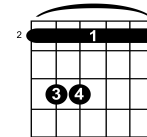
A



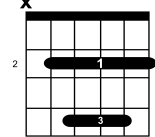
E sus4



F#m



B



[Verse 3]

Dsus2 A Esus4 A
She locked herself in the bathroom again

Dsus2 A Esus4
So I've been shutting down the lights

Dsus2 A Esus4 A
And I don't know if I'll ever go back again

Dsus2 A Esus4
I'm drivin' straight into the night

[Chorus]

Dsus2 A Esus4 A

Dsus2 A Esus4 A